

# KANAGAWA PREFECTURAL FISHERIES TECHNOLOGY CENTER

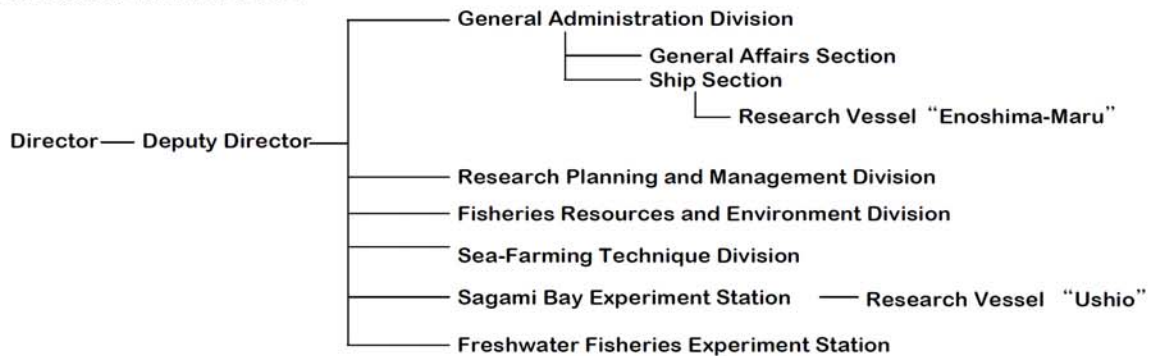
## HISTORY

- 1912 Fisheries Experimental Station was established in the Main Office of the Prefectural Government in Yokohama City.
- 1923 The Station moved to the newly constructed building in Odawara City.
- 1942 The Station moved to Misaki-cho, Miura City.
- 1964 The Station moved to the newly constructed building at the present site, Jogashima.
- 1995 The Station was reorganized as Fisheries Research Institute.
- 1997 The new building was completed.
- 2005 Fisheries Research Institute was renamed as Fisheries Technology Center.



Kanagawa Prefectural Fisheries Technology Center

## ORGANIZATION



## OUTLINE OF STUDY

### General Administration Division

General Affairs Section

- Management and administration of the Technology Center
- Communication with fishing boats on the sea

Ship Section

- Navigation and maintenance of the ship
  - ※ Research Vessel "Enoshima-Maru" 99t
    - Observation of conditions of Sagami Bay and Tokyo Bay
    - Research of fisheries resources



Radio station



RV "Enoshima-Maru"

### Research Planning and Management Division

- Planning and management of research programs
- Coordination between the Fisheries Technology Center and other organizations
- Research of high value added fisheries products and fisheries management
- Fisheries extension service



Amino acid analysis

**Fisheries Resources and Environment Division**

- Reserach on fisheries resources and oceanography
- Research on fisheries resources management
- Collection and provision of information about fishing and oceanographic condition
- Issuance of prompt reports on tuna-fishery conditions



Releasing hatchery-raised Japanese flounder



Research of fisheries oceanography by RV "Enoshima-Maru"

**Sea-Farming Technique Division**

- Development of sea farming techniques to enhance the stock of Japanese flounder, top shell, tokobushi abalone and other species
- Development of *Zostera* bed
- Resource management of red sea bream
- Study on propagation, aquaculture and prevention of fish diseases
- Production of juveniles of tokobushi abalone, top shell, Japanese flounder and other species

**Sagami Bay Experiment Station**



Model experiment of set net in the circulating water channel

- Study on fishing gears and fishing methods
- Research on fisheries oceanography
- Development of the fishery production technology for set net
- Fisheries extension service



RV "Ushio"

**Freshwater Fisheries Experiment Station**

- Breed improvement and propagation of ayu and pond smelt
- Restoration of biodiversity through propagation of endangered fish species
- Prevention of fish diseases



Metropolitan bitterling

**ADDRESS**

Kanagawa Prefectural Fisheries Technology Center  
 Jogashima, Misaki, Miura City, Kanagawa Pref. 238-0237  
 Phone: 81-46-882-2311 fax: 81-46-882-3790  
<http://www.agri-kanagawa.jp/suisoken/top.asp>

